

Measure no.

US 64011504-05

Subject

Rocker Arm Prematurely Worn

Status date (mm/dd/yy)

8/13/19

Status

Created

Organization

US, MOT

Date created (mm/dd/yy)

8/13/19

Created by

Gery Torok

PQM Problem reference**Release date (mm/dd/yy)****Approved by****Vehicles affected****E series**

K02 K03 K42 K46 K46/11

K46/12 K46/13 K47 K47/11 K49

K50 K50/11 K51 K52 K53

K54 K60 K81

Engine**Body****Production period (from/to)**

(mm/dd/yy)

9/1/09 /

Comment on production period**Feedback (all cases relating to****measure up to) (mm/dd/yy)****Complaint**

Ticking noises from the cylinder head

Cause

Due to quality differences in the adhesion of the DLC (Diamond like coating) of the rocker arm, the rocker arms and camshafts can wear prematurely.

This presents itself initially as ticking noises from the cylinder head.

Measure

All the K46/13 (S1000RR's) manufactured since 1/16/2018 are being fitted with a new version rocker arms. The other models, including the K8x (F850/750GS), will still be temporarily manufactured with the previous version rocker arms and converted gradually.

The coating of the new lever has additional layers, which have a damping effect and increase the robustness of the layers. Visually the new rocker arms differ considerably from the old ones, see attached image.

If the only complaint of the vehicle is ticking noises and the motor is not damaged apart from worn rocker arms and camshafts, ALL rocker arms and camshafts will be replaced and an oil and oil filter change carried out.

ATTENTION. Always check both cylinders in the K5x (R1200's) and ALWAYS replace all 8 rocker arms, even if all rocker arms do not show traces of wear!

Until further notice, continue to install the original rocker arms in all K02 (G310R), K03 (G310GS), K5x (R1200's) and K8x (F850/750GS) motorcycles.

For all S-models (K46, K46/11, K46/12, K46/13, K47, K47/11, and K49) in a repair case, the new version rocker arms are to be installed. Also exchange ALL 16 rocker arms and both camshafts, engine oil and oil filter).

Order the following part number for the S-model rocker arms: 11 33 8 389 397.

The part numbers cannot be found in the EPC until the update in May 2018.

If problems re-occur with the new rocker arms, please inform us immediately using a TSARA case with informative photos, in which the batch numbers of the rocker arms (see attachment for batch number location) and the complaints are visible.

Please ONLY use the defect number "11 33 00 28 rocker arm / rocker arm worn".

After expiration of vehicle and parts warranty, reimbursement would only be considered in the case of qualified goodwill.

Complaint

Fault location	Fault type	Fault place	Fault conditions
Driving	Rattling noise / tapping noise / knocking noise (disturbing noise).	Area, engine / transmission, front	When driving

Cause

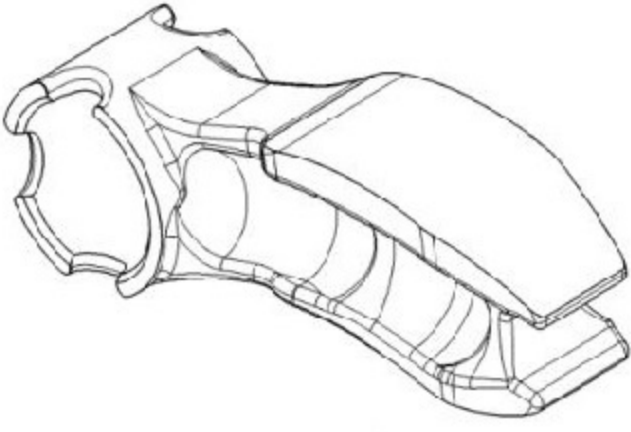
#	Fault location	Fault type	Fault place
1	11/33 Rocker arm / cam follower / bearing	Wear	
	Repair Task	Special Clearance	Area
	Checking, repairing, replacing	No	Powertrain

Fault code

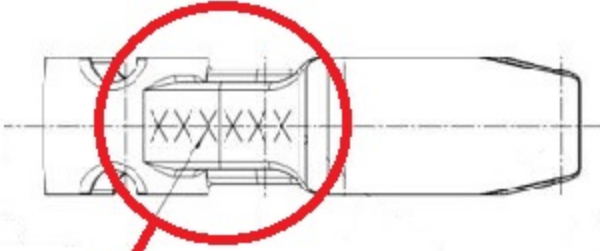
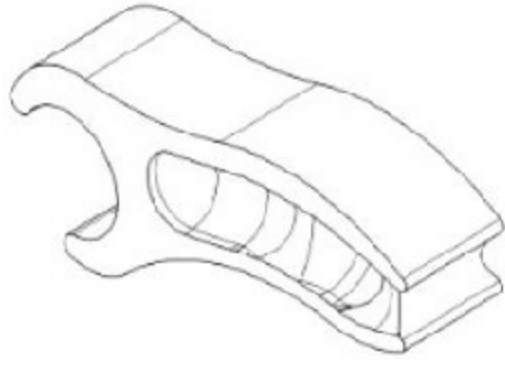
Progman / DIS / ISTA / ISTA/P

System	State	Version
--------	-------	---------

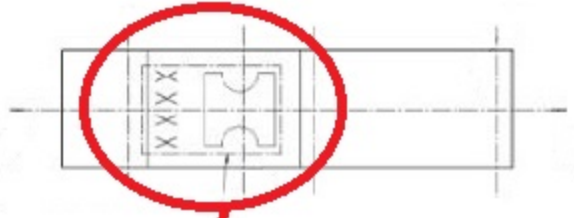
– New rocker arms



– Current rocker arms all other models



Batch Number



Batch Number